



The Auto Locking Hub enables the connection and disconnection of the "free-wheeling" wheels with the active drive system when switching modes between two-wheel drive and all-wheel drive.

Shifting to the all-wheel drive mode connects the front propshaft and the axle shafts to the other moving members of the drive system. Likewise, the front wheels and front axle shafts disconnect when shifting back into the two-wheel drive mode returning the front wheel to the "free-wheeling" condition.

The ALH accomplishes two basic operations, commonly known as "LOCK" and "UNLOCK".

Head Office & Bhosari Unit

Divgi-TTS Pvt. Ltd.
75 General Block, MIDC, Bhosari, Pune 411 026
TEL: +91 – 20 – 27302000, 27129690
FAX: +91 – 20 – 27129691

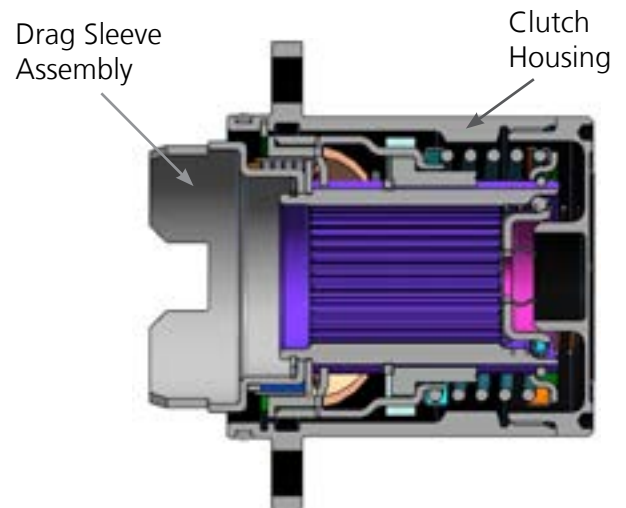
Sirsi Unit

Divgi-TTS Pvt. Ltd.
Banavasi Road, Sirsi 581 401,
TEL: +91 – 08384 – 229285, 225708
FAX: +91 – 08384 – 229284

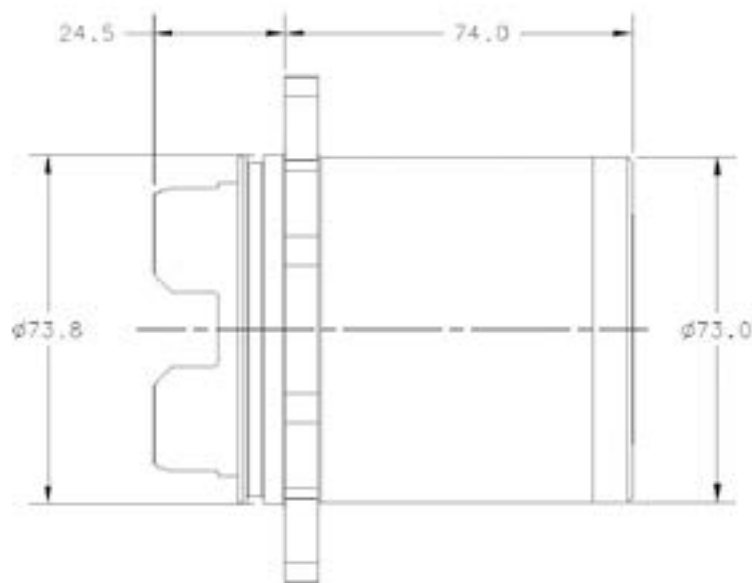
Features:

- » Stops unnecessary parasitic losses in two wheel drive.
- » Reduces total vehicle weight to enhance fuel use efficiency.
- » Provides engagement of four-wheel drive at highway speeds.
- » Quarter rotation of wheel in reverse direction. No manual unlocking.
- » Black powder coated with aluminum decorative plate.

Cross Sectional View



Installation Layout



Specifications:

Input Configuration	Female splines	Weight (Kg)	1.75
Output Configuration	Bolted flange	Typical GVW Rating (Kgs)	2500
Locking & Unlocking	90°(clock wise and counter clock wise)	Housing Material	Heat treated medium carbon steel

Head Office & Bhosari Unit

Divgi-TTS Pvt. Ltd.
75 General Block, MIDC, Bhosari, Pune 411 026
TEL: +91 – 20 – 27302000, 27129690
FAX: +91 – 20 – 27129691

Sirsi Unit

Divgi-TTS Pvt. Ltd.
Banavasi Road, Sirsi 581 401,
TEL: +91 – 08384 – 229285, 225708
FAX: +91 – 08384 – 229284